

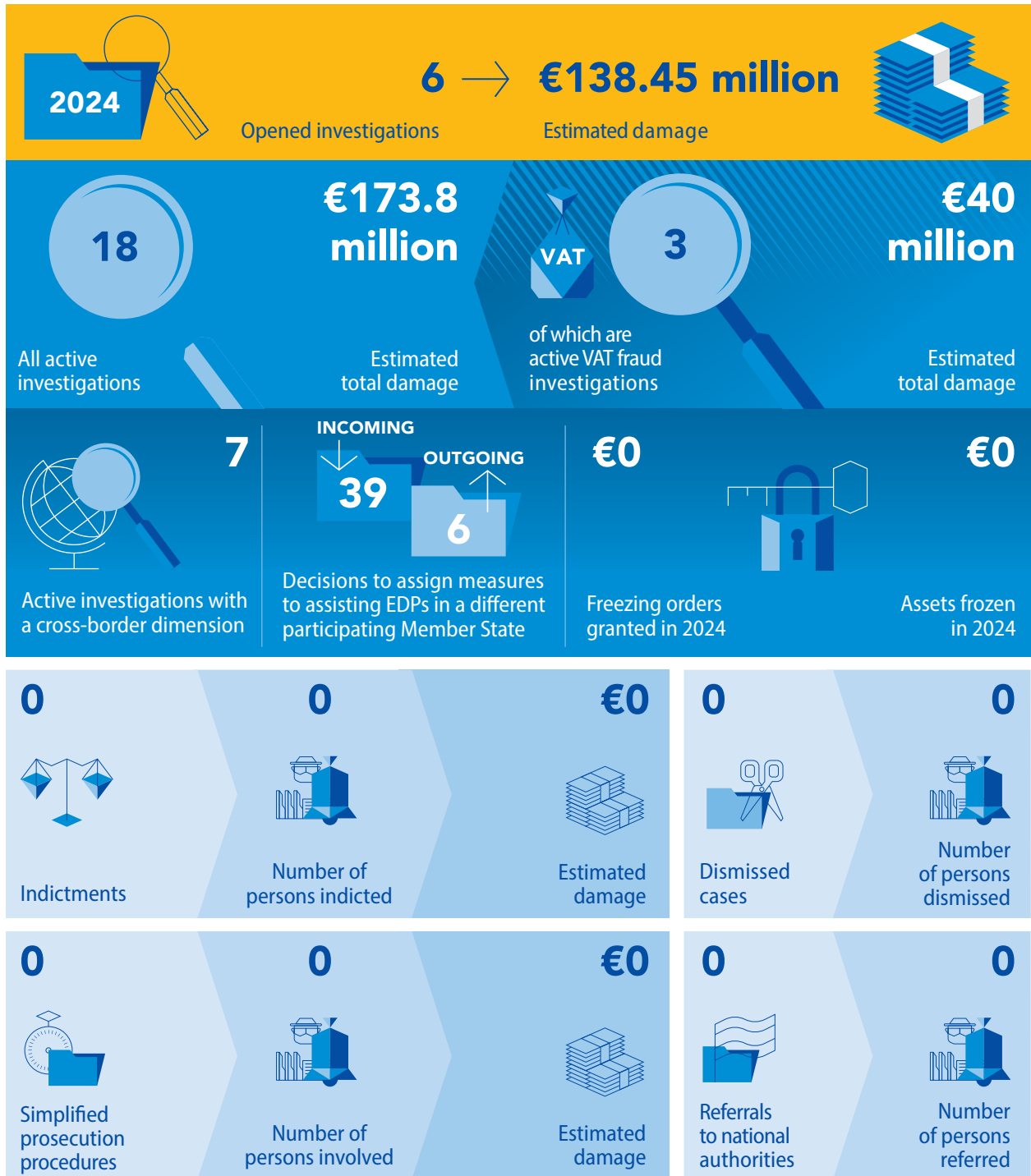
LUXEMBOURG



OPERATIONAL ACTIVITY

DATA VALID ON 31 DECEMBER 2024


European Delegated Prosecutors (Active): **2**
 National European Delegated Prosecutors' Assistants (FTE): **2**
 Dedicated and specialised investigators: **Yes**



RECEIVED REPORTS/COMPLAINTS

From EU institutions, bodies, offices and agencies	2	From private parties	11
From national authorities	5	Ex officio	5
TOTAL			23

JUDICIAL ACTIVITY IN CRIMINAL CASES

	Ongoing cases in the trial phase	0
	Number of first court decisions	0
	Number of appeals against first court decisions	0
	Number of ongoing cases in the appeal phase	0
	Number of final court decisions	0
	Number of extraordinary legal remedies against court decisions	0
	Convictions	0
	Number of persons convicted	0
	Acquittals	0
	Number of persons acquitted	0

TYOLOGIES IDENTIFIED IN ACTIVE EPPO CASES

NUMBER OF INVESTIGATED OFFENCES BROKEN DOWN BY TYPE

	13		3		2
Non-procurement expenditure fraud	31.71%	Procurement expenditure fraud	7.32%	PIF crime-focused criminal organisation	4.88%
	3		3		2
Non-VAT revenue fraud	7.32%	VAT revenue fraud	7.32%	Corruption	4.88%
	2		10		3
Misappropriation	4.88%	Money laundering	24.39%	Inextricably linked offence	7.32%

ACTIVE FUNDING FRAUD INVESTIGATIONS

BROKEN DOWN BY PROGRAMME

Agricultural and rural development programmes	0	Climate and environment programmes	0
Maritime and fisheries programmes	0	Recovery and resilience programmes	0
International cooperation programmes	1	Mobility and transport, energy and digitalisation programmes	0
Regional and urban development programmes	0	Asylum, migration and integration programmes	1
Education and culture-related programmes	1	Industry, entrepreneurship and SME programmes	0
Research and innovation programmes	0	Security and defence programmes	0
Employment, social cohesion, inclusion and values programmes	0	Other programmes/doubt cases	10